
Crosby[®] contributes to “The Coldest Journey” Antarctic Expedition with our COLD TUFF[®] products for extreme conditions

Crosby is excited to be chosen as a partner for the world’s greatest living explorer, Sir Ranulph Fiennes, in his toughest challenge yet: a trek across the Antarctic in winter, known as ‘The Coldest Journey’. With the support of the Commonwealth and sponsors, including Crosby Europe, Sir Ranulph and five colleagues will be testing the limits of human endurance with temperatures falling as low as -90° C as they cover 2,000 miles in 6 months crossing the polar plateau.

Not only does the expedition aim to complete the first ever trans-Antarctic crossing during the polar winter, but importantly it is attempting to raise US\$10 million for, “Seeing is Believing”, a global charitable initiative to fight avoidable blindness. All donations will be matched by expedition sponsor, Standard Chartered.

Crosby will be supporting this expedition with its full range of COLD TUFF[®] products, which are specifically manufactured to improve working in extreme environments. Crosby’s range of G-2130A (Grade 80) alloy shackles are forged, quenched and tempered, hot dip galvanized and, DNV type approved. These features, along with other critical performance requirements such as ductility, an 8:1 design factor, as well as impact properties and full traceability, provide the needed reassurance when working in extreme environments like those expected during Sir Ranulph Fiennes’ expedition.

“As an innovator in the industry, this recognition of our brand is very rewarding. Our drive to assist working in these types of environments, from the demands of the energy markets to the safe transportation of vital equipment, makes this expedition very motivational to all involved in the design and manufacture of our equipment”, states Richard Oldknow, Sales and Marketing Director for Crosby’s European operations.

As with all users of Crosby equipment, Crosby will offer full support through training and worldwide technical support. “We are extremely honored to be supporting this project and aiding the continued efforts of ‘Seeing is Believing’ in this way”, adds Oldknow.

On December 6, 2012, the expedition team has left London, bound for Antarctica. On March 21, 2013, the equinox, the six expedition members will begin a six month journey to reach the Ross Sea. Using the very latest technological innovations, this mission will pave the way for year-round exploration in the Antarctic.

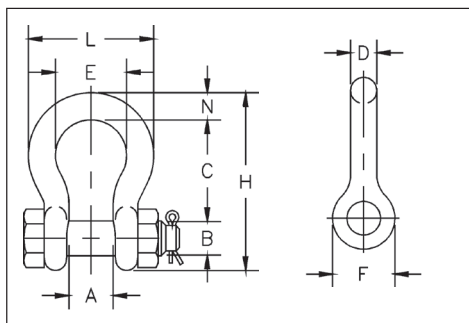


- Capacities 2 to 17 metric tons.
- Working Load Limit permanently shown on every shackle.
- Forged Alloy Steel – Quenched and Tempered, with bow and bolt.
- Hot Dip galvanized.
- Shackles can be **RFID EQUIPPED**.
- Meets or exceeds all requirements of ASME B30.26 including identification, ductility, design factor, proof load and temperature requirements. Importantly, these shackles meet other critical performance requirements including impact properties and material traceability, not addressed by ASME B30.26.
- Shackles can be furnished proof tested with certificates to designated standards, such as ABS, DNV, Lloyds, or other certification when requested at time of order.
- Type Approval and certification in accordance with DNV Type Approval under DNV 2.7-1.
- Shackles are Quenched and Tempered and meets DNV impact requirements of 42 joules (31 ft. lbs.) at -40 degree C (-40 degree F).



G-2130A

Bolt Type Anchor shackles with thin head bolt – nut with cotter pin. Meets the performance requirements of Federal Specification RR-C-271D Type IVA, Grade A, Class 3, except for those provisions required of the contractor. For additional information, see General Catalog.



G-2130A



Nominal Size (in.)	Working Load Limit (t)*	G-2130A Stock No.	Weight Each (kg)	Dimensions (mm)									Tolerance +/-	
				A	B	C	D	E	F	H	L	N	C	A
1/2	2	12194724	.36	20.6	16.0	47.8	12.7	33.3	30.2	83.5	58.5	12.7	3.30	1.50
5/8	3-1/4	12194914	.62	26.9	19.1	60.5	16.0	42.9	38.1	106	74.5	17.5	6.35	1.50
3/4	4-3/4	12195164	1.23	31.8	22.4	71.5	19.1	51.0	46.0	126	89.0	20.6	6.35	1.50
7/8	6-1/2	12195344	1.79	36.6	25.4	84.0	22.4	58.0	53.0	148	102	24.6	6.35	1.50
1	8-1/2	12195524	2.28	42.9	28.0	95.5	25.4	68.5	60.5	167	119	26.9	6.35	1.50
1-1/8	9-1/2	12195784	3.75	46.0	31.8	108	28.7	74.0	68.5	190	131	31.8	6.35	1.50
1-1/4	12	12195984	5.31	51.5	35.1	119	31.8	82.5	76.0	210	146	35.1	6.35	1.50
1-3/8	13-1/2	12196144	7.18	57.0	38.1	133	35.1	92.0	84.0	233	162	38.1	6.35	3.30
1-1/2	17	12196324	8.62	60.5	41.4	146	38.1	98.5	92.0	254	175	41.1	6.35	3.30

* NOTE: Maximum Proof Load is 2.0 times the Working Load Limit. Minimum Ultimate Strength is 8 times the Working Load Limit. For Working Load Limit reduction due to side loading applications, see the General Catalog.

Crosby Europe:

BELGIUM
Industriepark Zone B n°26
2220 Heist-op-den-Berg

P: (+32) (0)15 75 71 25
F: (+32) (0)15 75 37 64
sales@crosbyeurope.com

Stock # 9992180 11/2011 English-Metric

FRANCE
21, rue du Petit Albi
Parc d'Affaires Silic
95800 Cergy - St. Christophe
P: (+33) (0)1 34 201 180
F: (+33) (0)1 34 201 188
sales@crosbyeurope.fr

UNITED KINGDOM
Station Street
Cradley Heath
West Midlands B64 6AJ
P: (+44) (0)1226 290 516
F: (+44) (0)1226 240 118
sales@crosbyeurope.co.uk